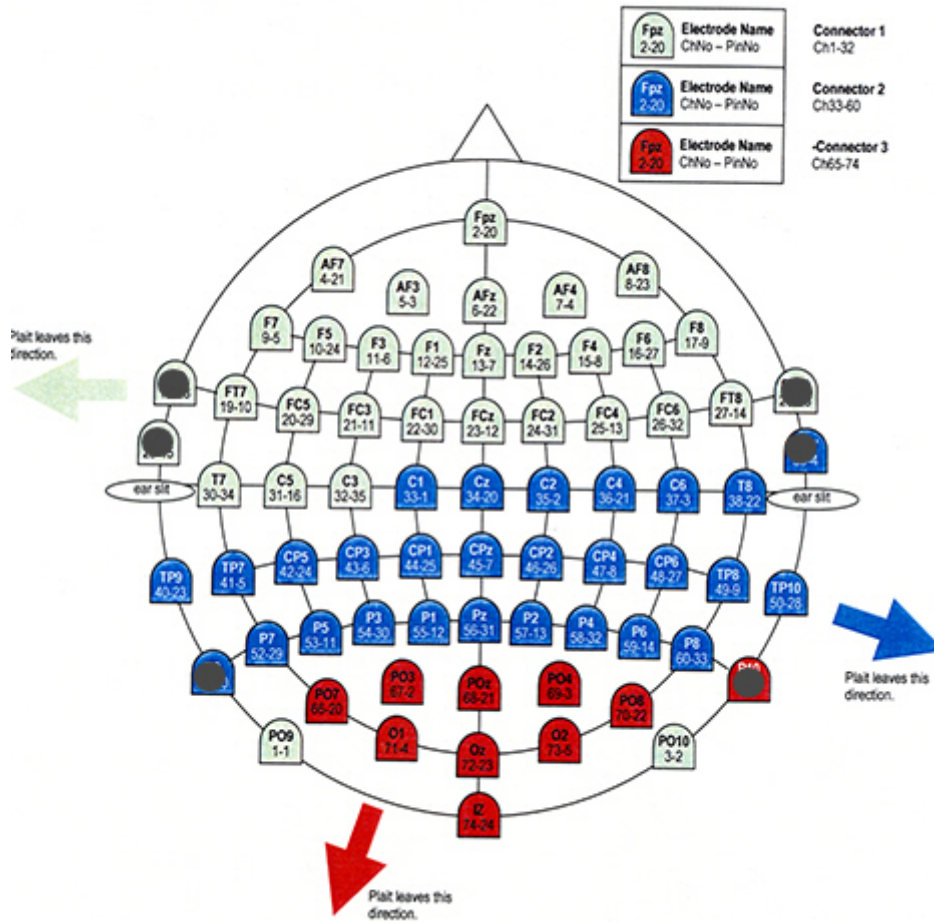


64-channel electrode configuration for MEGIN Triux neo at CBU

Note: The numbers in the image do NOT refer to the sequence of electrodes in the data file. This sequence is specified in the column "Sequence in data" in below table.



Label	Sequence in data	Digitisation Order
PO9	1	1
FPz	2	2
PO10	3	3
AF7	4	4
AF3	5	5
Afz	6	6
AF4	7	7
AF8	8	8
F7	9	9
F5	10	10
F3	11	11

F1	12	12
Fz	13	13
F2	14	14
F4	15	15
F6	16	16
F8	17	17
PO4	18	59
FT7	19	18
FC5	20	19
FC3	21	20
FC1	22	21
FCz	23	22
FC2	24	23
FC4	25	24
FC6	26	25
FT8	27	26
PO8	28	60
O1	29	61
T7	30	27
C5	31	28
C3	32	29
C1	33	30
Cz	34	31
C2	35	32
C4	36	33
C6	37	34
T8	38	35
Oz	39	62
TP9	40	36
TP7	41	37
CP5	42	38
CP3	43	39
CP1	44	40
CPz	45	41
CP2	46	42
CP4	47	43
CP6	48	44
TP8	49	45
TP10	50	46
O2	51	63
P7	52	47
P5	53	48
P3	54	49
P1	55	50
Pz	56	51
P2	57	52

P4	58	53
P6	59	54
P8	60	55
lz	61	64
PO7	62	56
PO3	63	57
POz	64	58