

MRC

Cognition and
Brain Sciences Unit



UNIVERSITY OF
CAMBRIDGE

MRI Physics II: the BOLD signal and common image artefacts

Marta M Correia

MRC Cognition and Brain Sciences Unit

14th January 2020

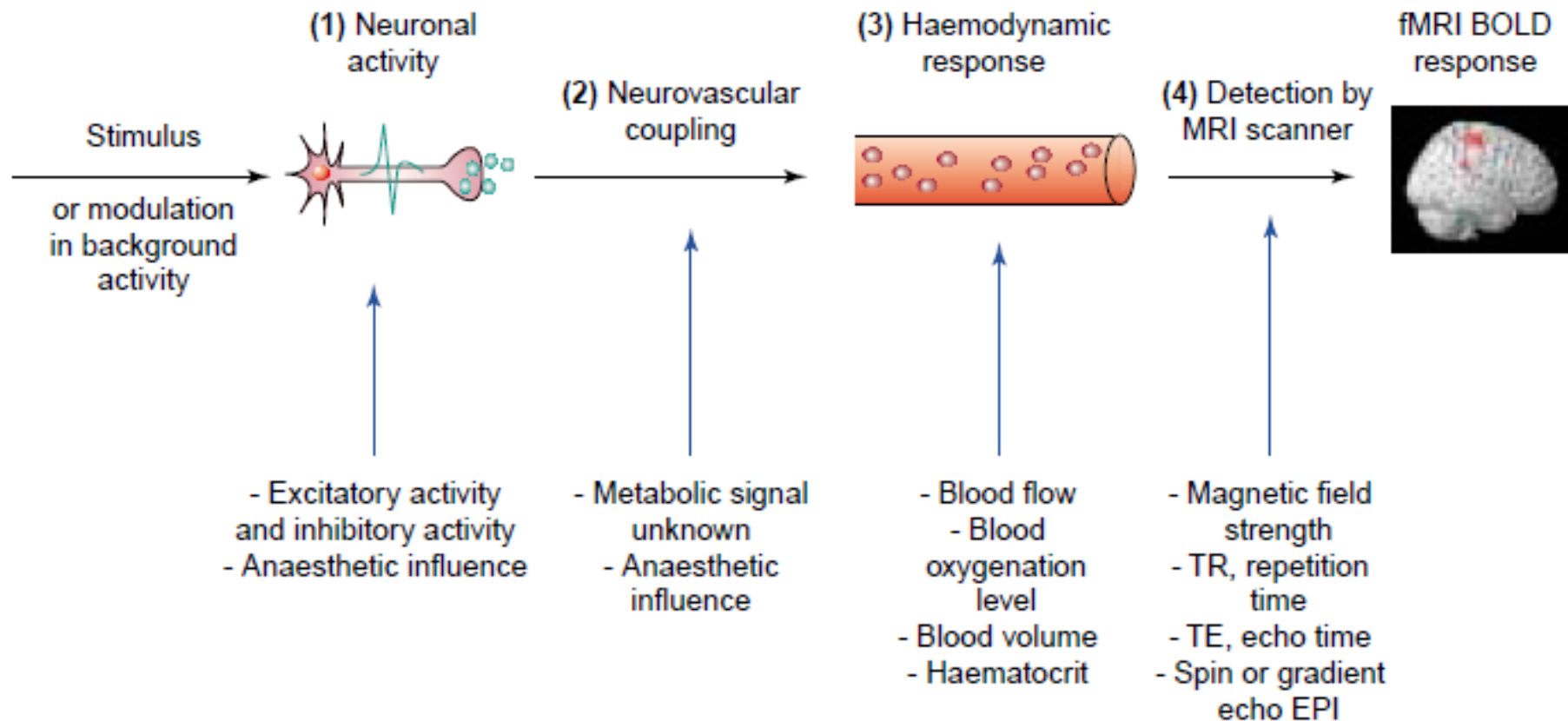
Overview

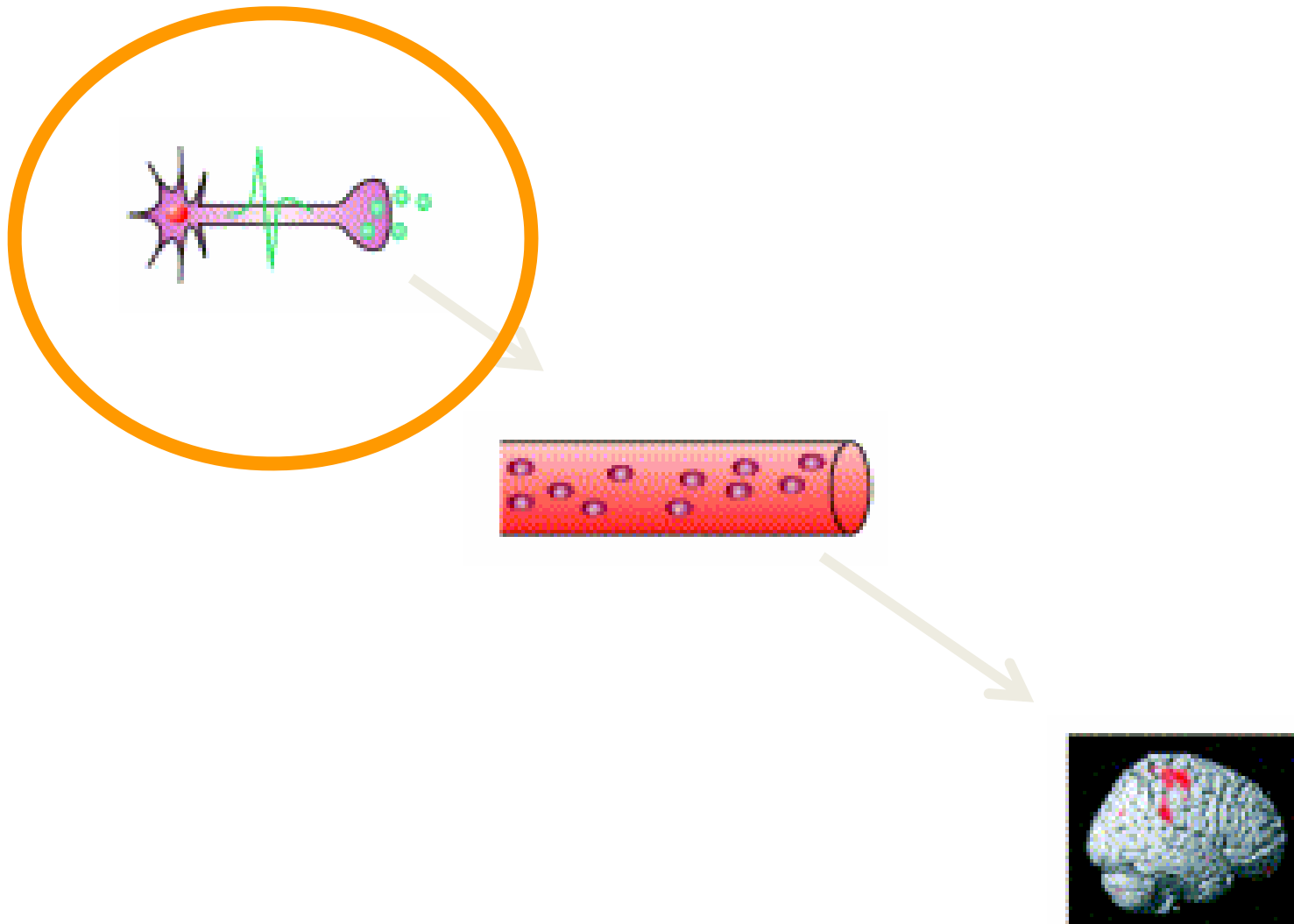
- Biophysics of functional MRI
 - Haemodynamic response
 - Haemodynamic – MRI coupling
 - Measuring the BOLD signal

- Common Image artefacts
 - EPI distortion
 - Movement artefacts
 - Signal dropout

Part I: Biophysics of functional MRI

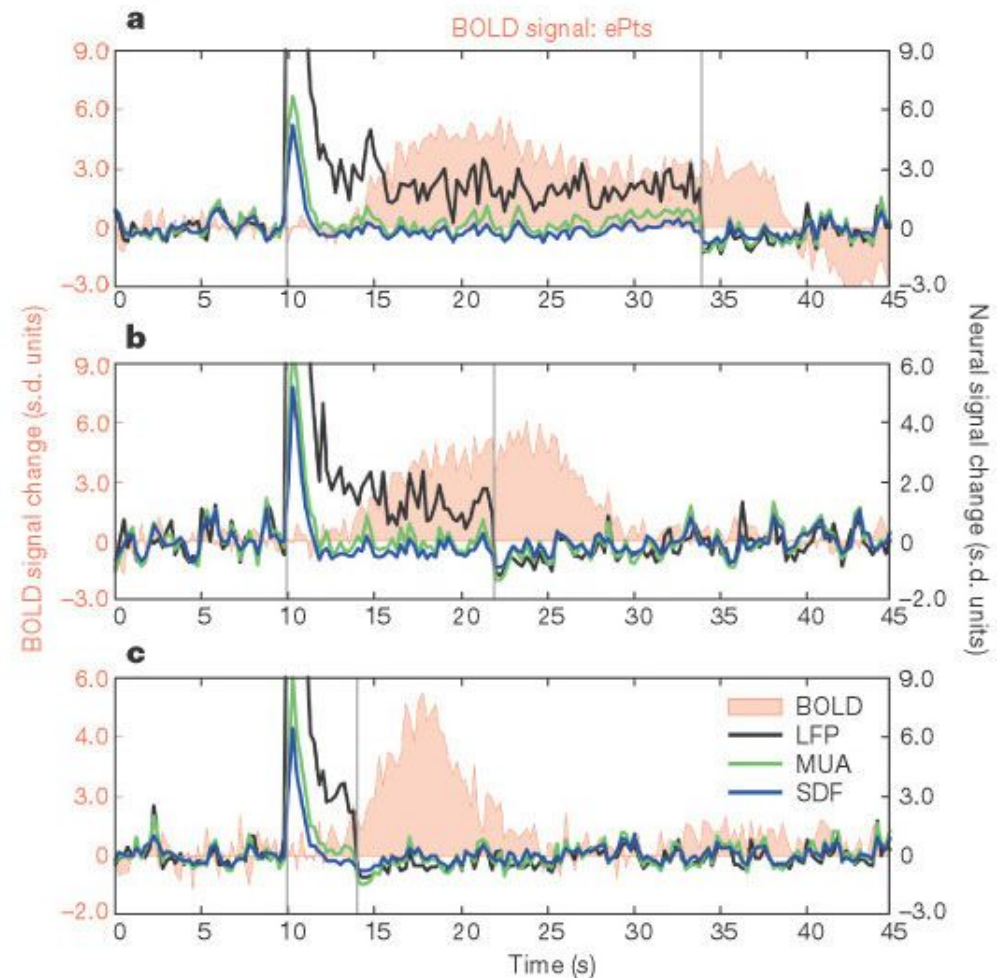
Key determinants of fMRI BOLD response





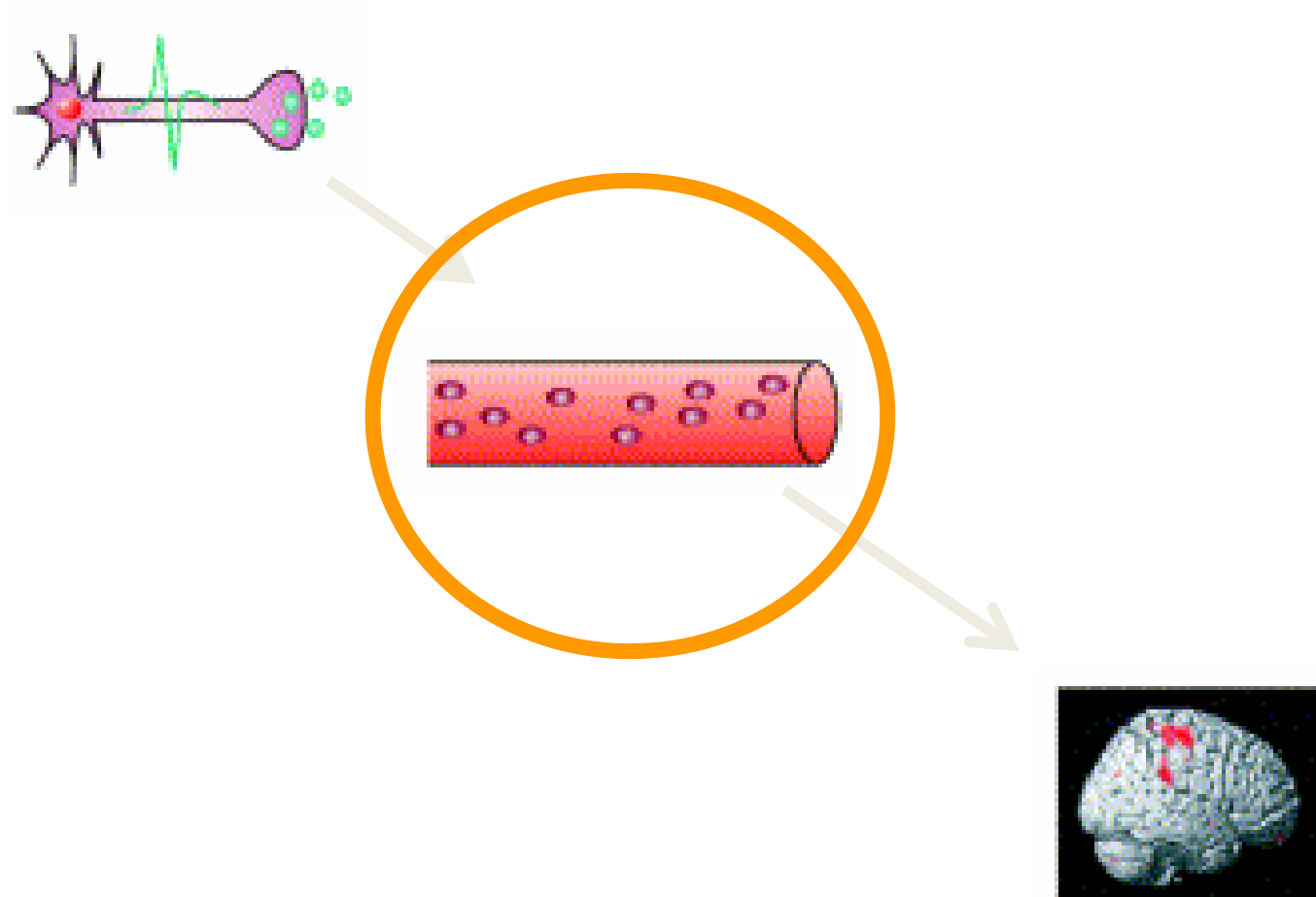
What aspects of neuronal activity determines BOLD response?

- **LFP (Logothetis et al, 2001)**
 - Simultaneous BOLD fMRI & electrophysiological recording
 - Measured **Local Field Potentials** (pre-synaptic, input) and Multi Unit Activity (spiking, output)
 - MUA adapts a couple of seconds after stimulus onset, with **LFP** remaining the only signal correlated with the BOLD response.



What aspects of neuronal activity determines BOLD response?

- **Local energy use/Neurotransmitter signalling (Attwell & Iadecola, 2002)**
 - In the early days of fMRI it was often assumed that the increase of blood flow is a direct consequence of the oxygen consumption or energy usage of the tissue.
 - If energy usage did control blood flow, then BOLD signals would reflect the activity of the cellular processes consuming most energy.
 - **Assessment of energy use by different processes**
 - Spiking very energy expensive
 - Most used by postsynaptic currents & action potentials
 - The available evidence indicates that the hemodynamic response is driven by neurotransmitter signalling and not local energy use.

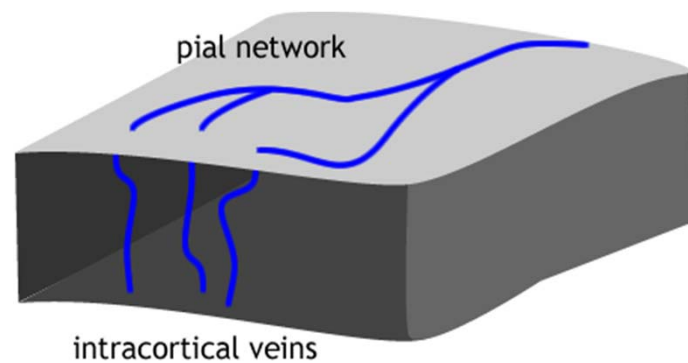


Hemodynamic response (HDR)

- **Increase in blood volume**
 - Increase in volume throughout system, from arterioles to capillaries, venules & veins
 - Fastest and greatest response in arterioles (Vanzetta, Hildenshen & Grinwald, 2005)
- **Large increase in blood flow**
- **Oxygenation**
 - Initial de-oxygenation in capillaries (Vanzetta et al, 2005)
 - Then, flow increase leads to a increase in oxygenation relative to the baseline state (Ogawa et al, 1990; Bandettini et al, 1997)

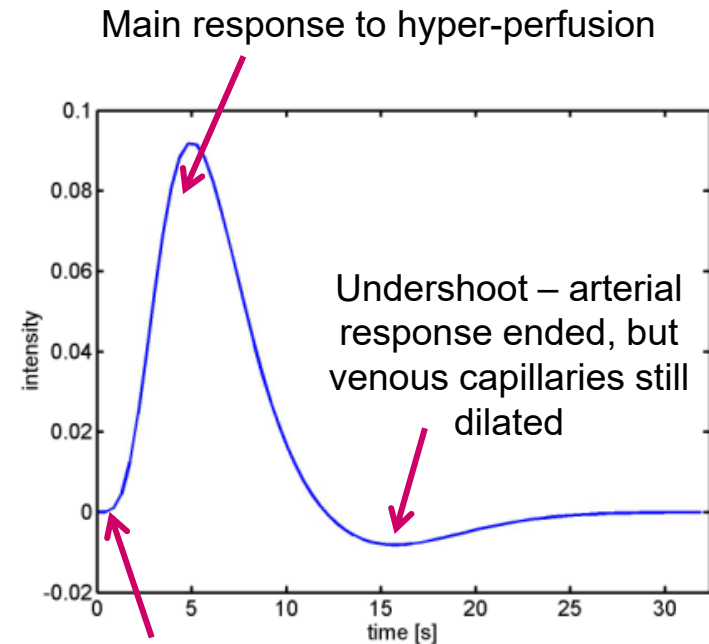
Influences on spatial distribution of HDR

- Spatial characteristics influenced by
 - Vascular plumbing & structure
 - Intracortical vessels
 - Pial network
 - Larger vessels
 - Size of region activated (Turner, 2002)

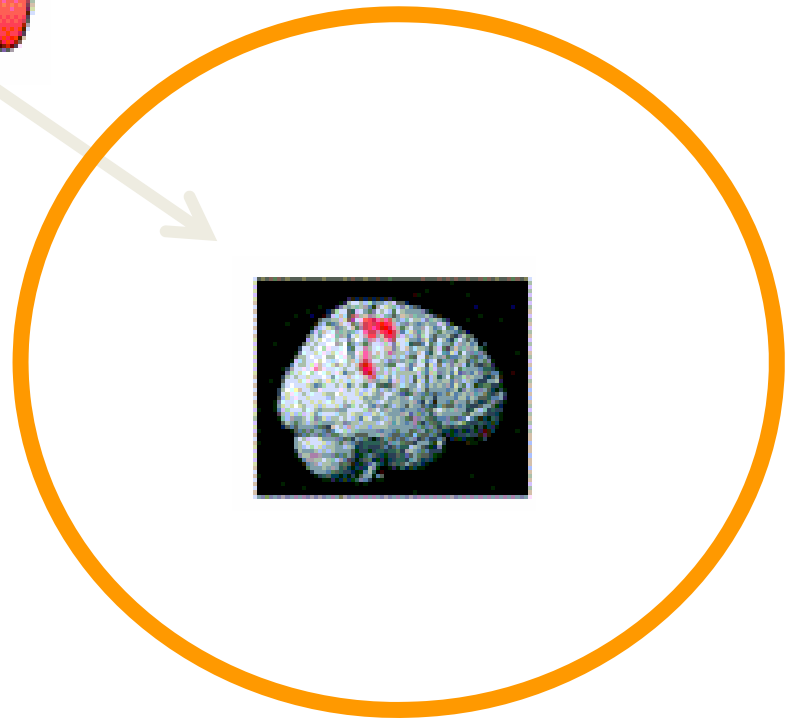
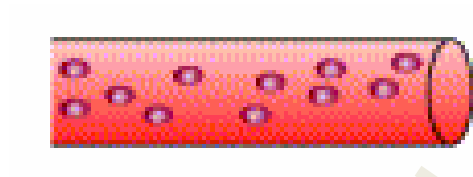
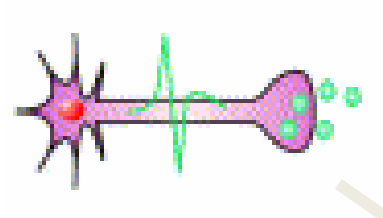


Influences on temporal profile of HDR

- Temporal characteristics influenced by
 - By neurovascular coupling in arterioles/capillaries
 - Flow times
 - Function of vessel size
 - Blood velocity proportional to radius – much of delay in small vessels
 - Mixing due to laminar flow within vessels (de Zwart, 2005)
 - Other effects (e.g., vessel size dependence of post-stimulus adaptation – Mandeville et al, 1999; Yacoub et al, 2006)



Initial dip?
Prior to vascular response, so spatially precise, but weak and controversial



Hemodynamic-MRI coupling

- HDR affects MRI signal through several mechanisms:
 - Reduced field gradients around venules & veins - change in T2*
 - Reduced phase mismatch between signal from inside and outside venules & veins
 - Change in blood volume

Hemodynamic-MRI coupling

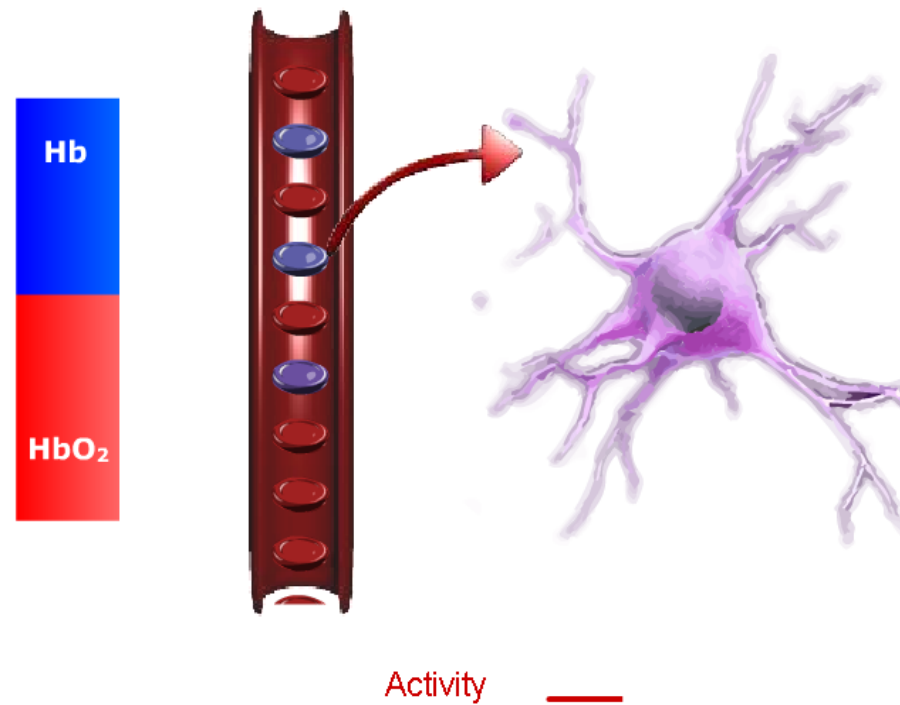
- Affected by parameters of MR acquisition
 - Field strength (higher field – more sensitivity, particularly to smaller vessels/capillaries) (Haacke, 1994; Yacoub et al, 2003)
 - Gradient echo vs. spin echo
 - latter insensitive to large vessels
 - less signal, but more spatially specific (Lee et al, 1999; Zhao et al, 2006)

Detecting HDR with MRI – BOLD signal

- BOLD – Blood Oxygenation Level Dependent
- BOLD fMRI employs haemoglobin as a convenient contrast agent
- It relies on the magnetization difference between oxy- and deoxyhaemoglobin to create the MRI signal.

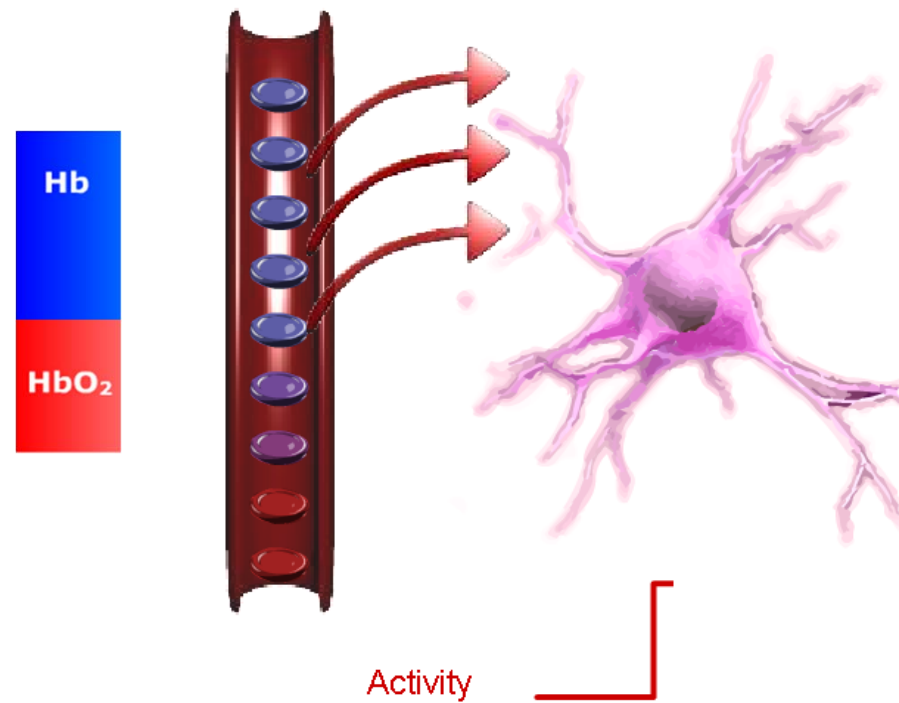
BOLD contrast step-by-step (1)

- The neuronal metabolism is dependent on blood oxygen supply, as the production of energy from glucose is mainly of the aerobic type.



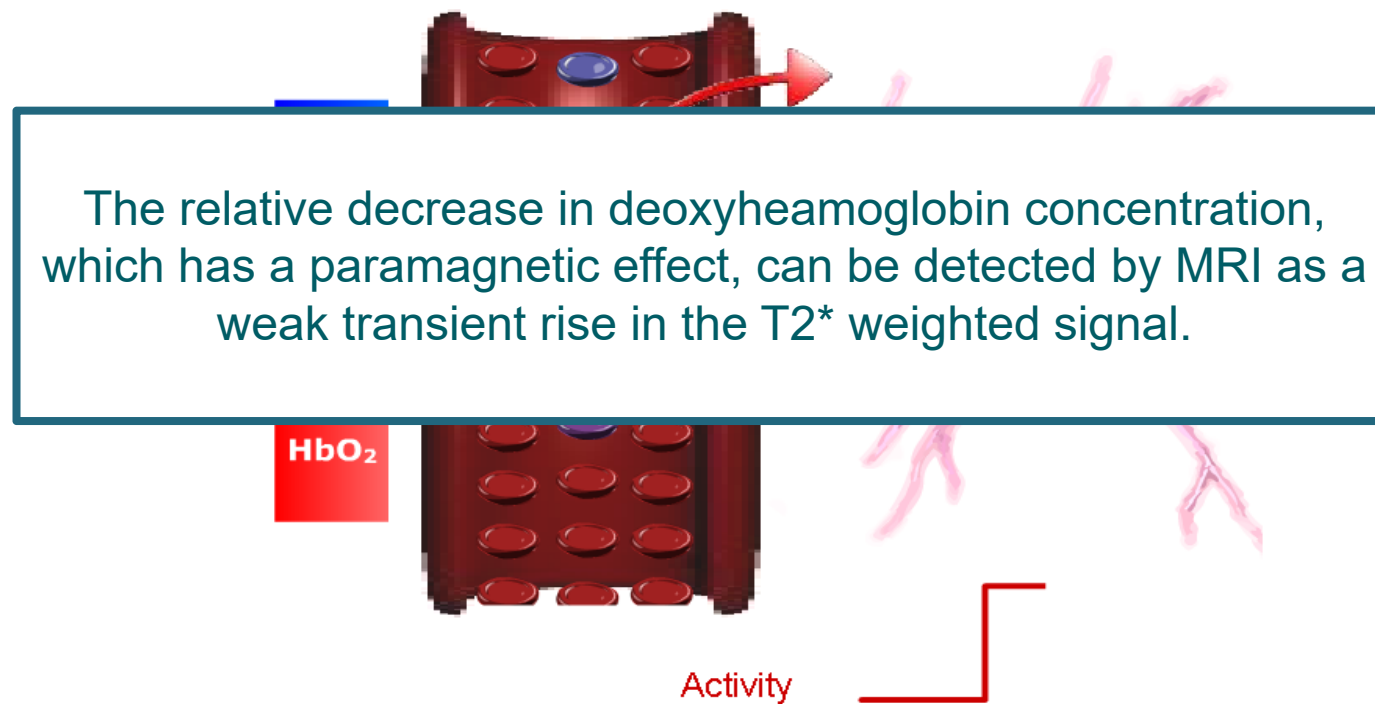
BOLD contrast step-by-step (2)

- Neuronal activity provokes an increase in oxygen consumption and an even higher increase in local blood flow (neurovascular coupling).



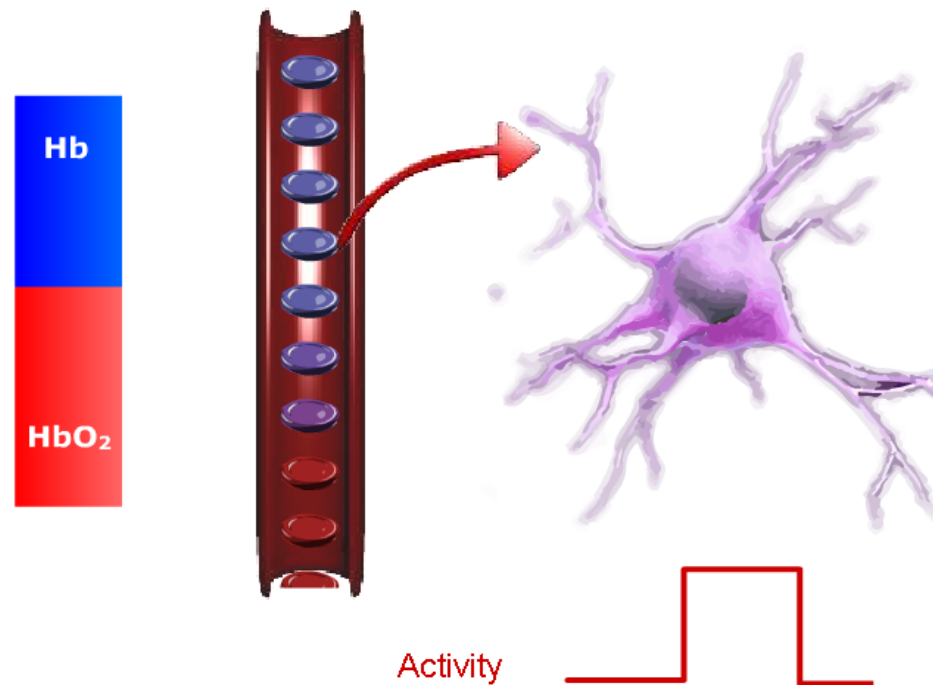
BOLD contrast step-by-step (3)

- As the increase in flow exceeds the increase in oxygen consumption, neuronal activity is expressed as a relative increase in oxyhemoglobin compared to deoxyhemoglobin in the activated zones.



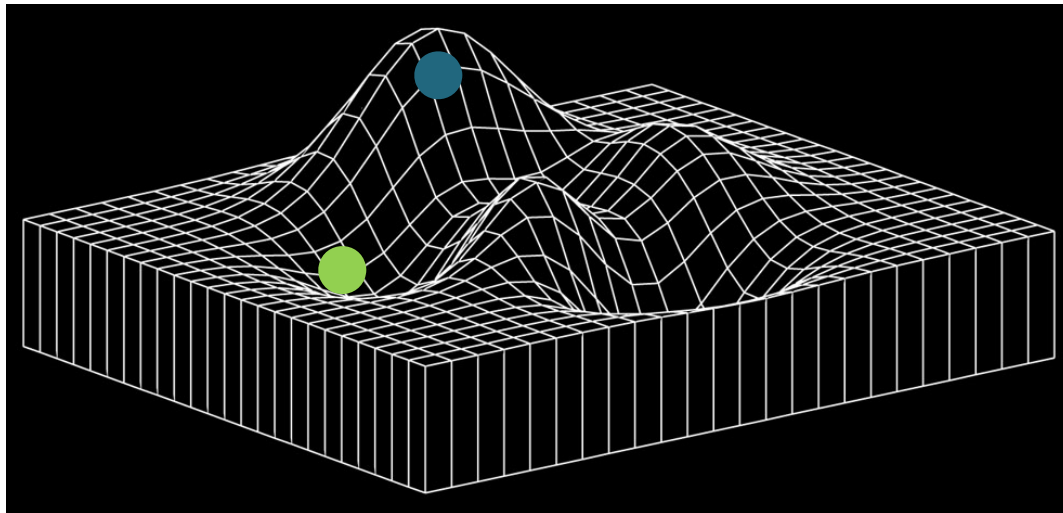
BOLD contrast step-by-step (4)

- As the neural activity goes back to baseline so does the oxy:deoxyhaemoglobin ratio and consequently the MRI signal



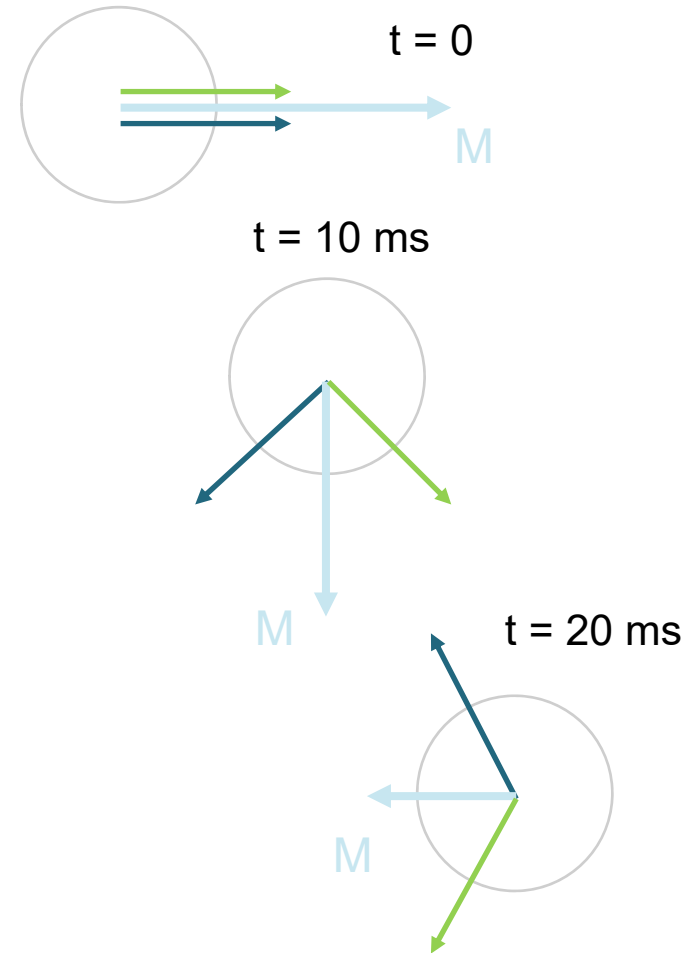
How does haemoglobin change T2*?

From yesterday: Signal loss due to B_0 inhomogeneity



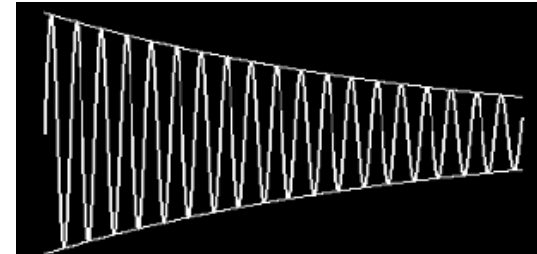
$$\omega_0 = \gamma B_0$$

● has higher frequency than ●

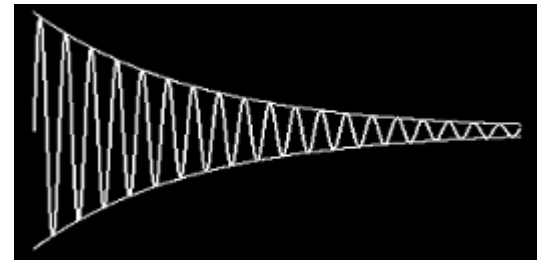


From yesterday: Effective transverse relaxation (T_2^*)

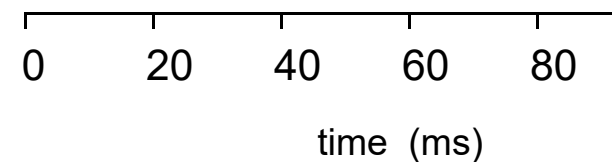
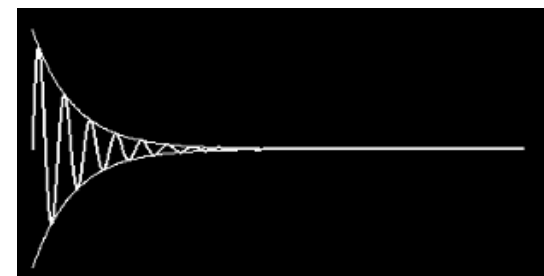
No inhomogeneities
($T_2^* = T_2 = 100$ ms)



Moderate inhomogeneities
($T_2^* = 40$ ms)



Strong inhomogeneities
($T_2^* = 10$ ms)

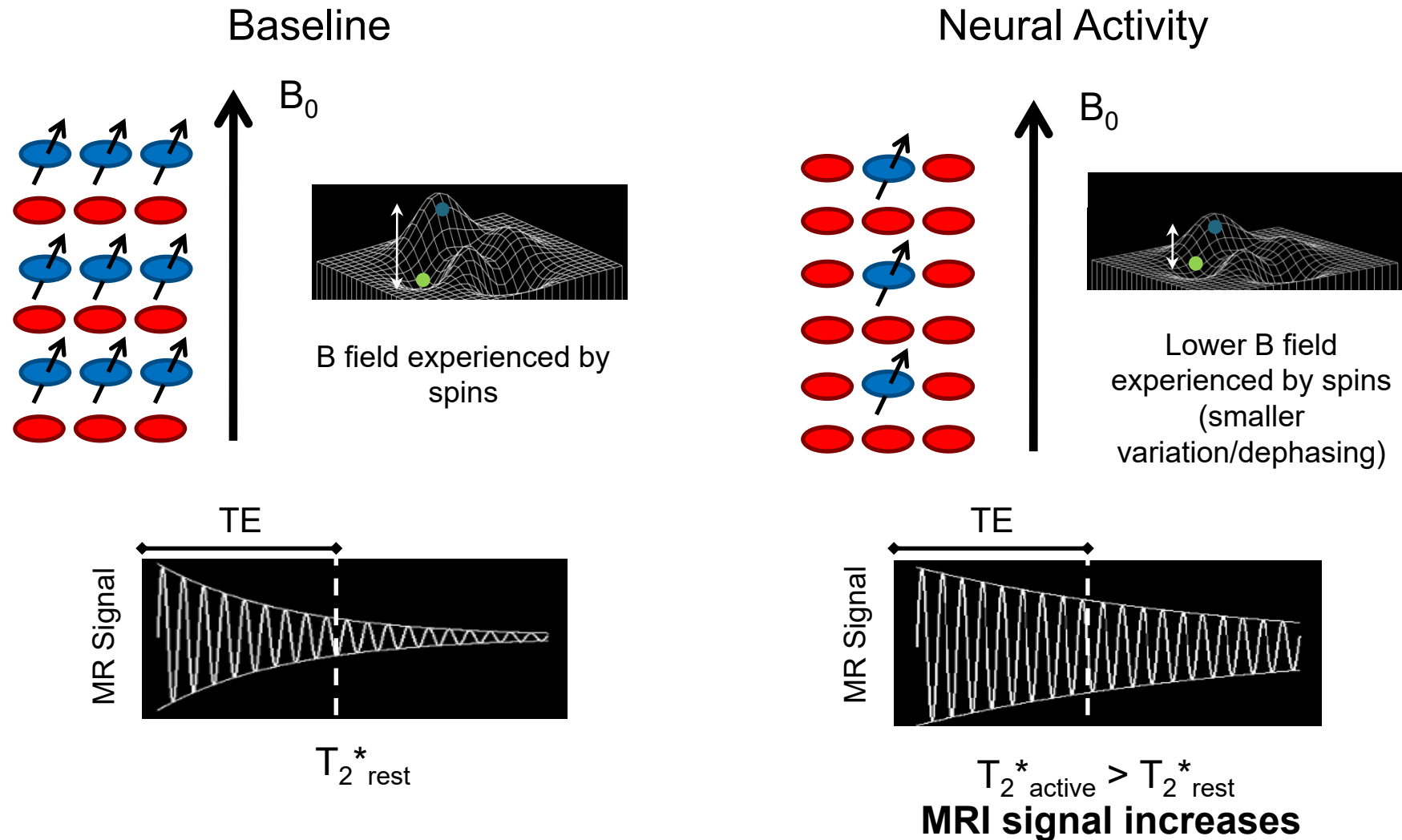


How does haemoglobin change T2*?

- Since oxygen is not very soluble in blood, it is transported bound to the large iron-containing molecule, **haemoglobin**.
- The presence of iron atoms in the molecule mean that haemoglobin has **magnetic properties**.
- The location of the oxygen binding sites determines that deoxyhaemoglobin is **paramagnetic** (having a significant effect on its environment) while oxyhaemoglobin is **diamagnetic** (having a neglectable effect).

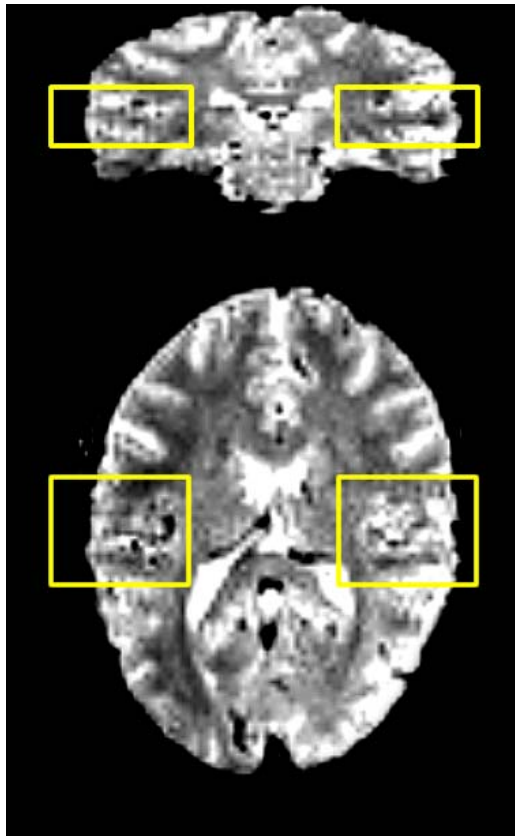


How does haemoglobin change T2*?



Example: auditory cortex activation

Baseline

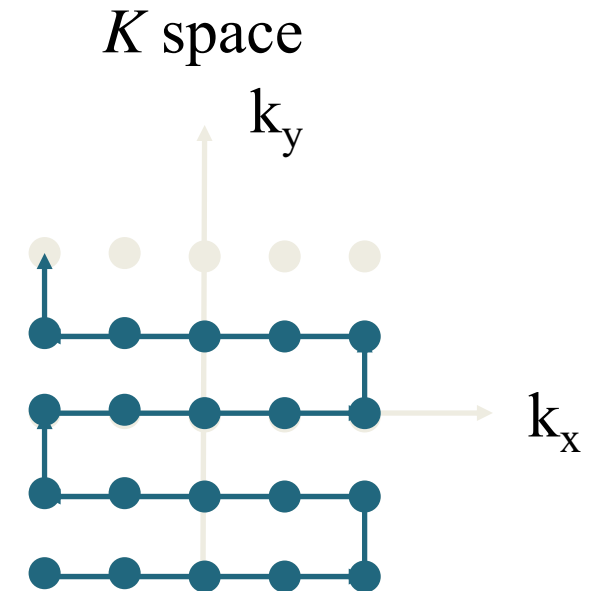
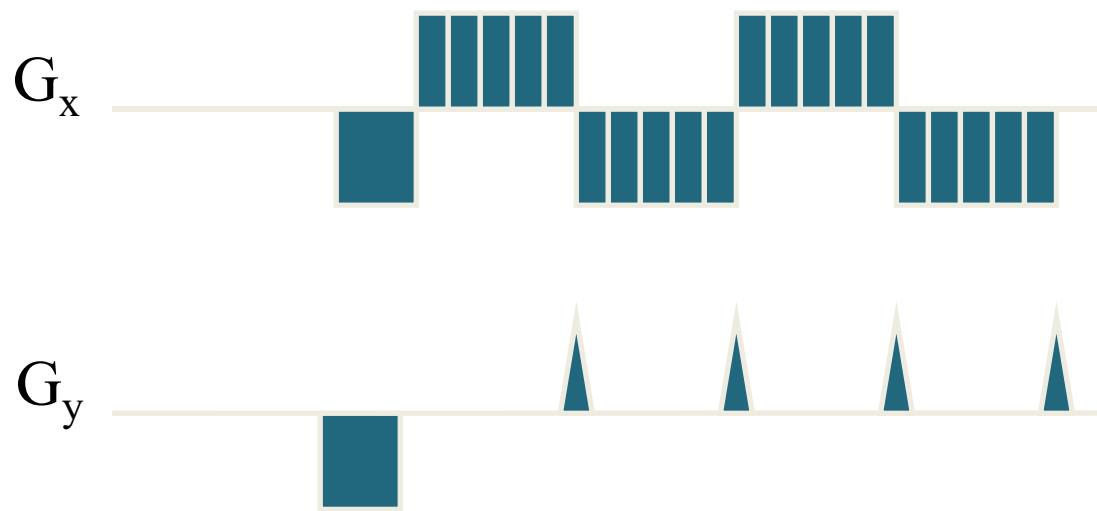
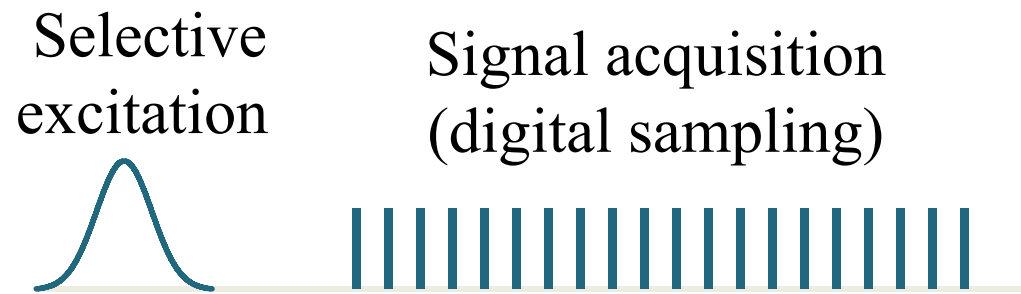


Neural Activity



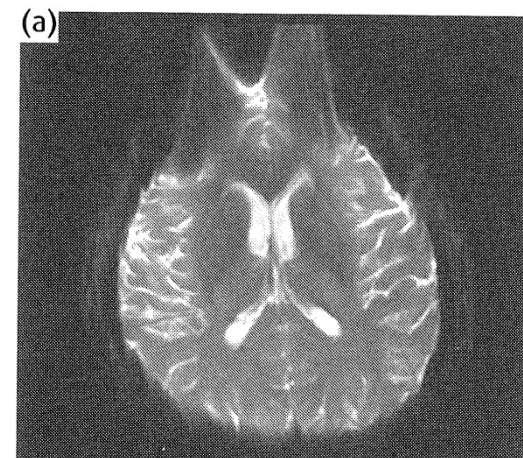
Part II: Common image artefacts

From yesterday: Echo Planar Imaging (EPI)



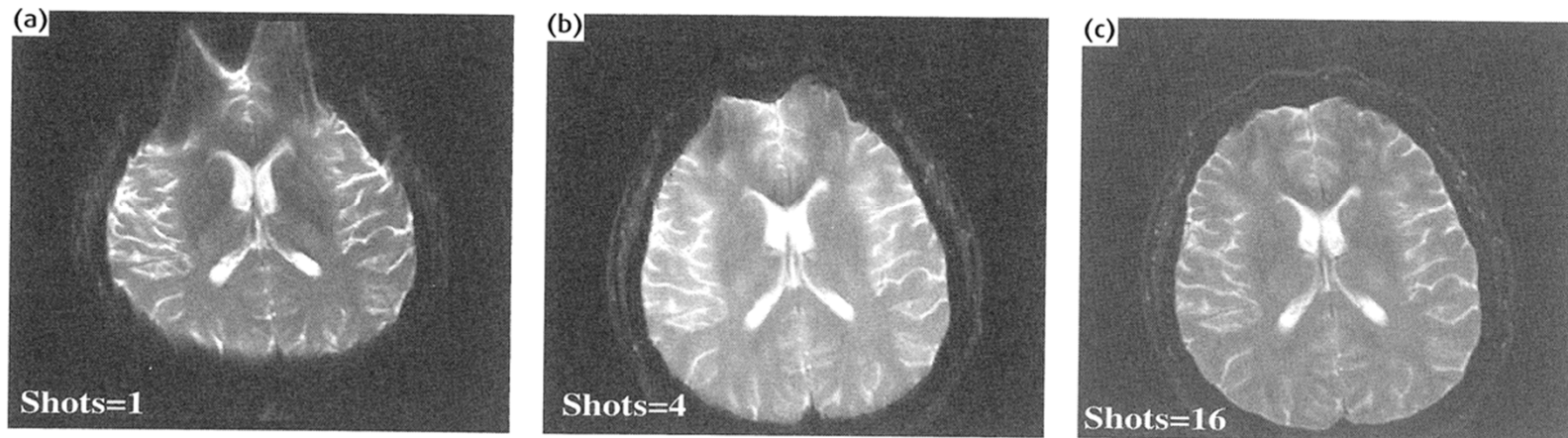
EPI distortion: the price we pay for fast imaging

- **Bandwidth** is a measure of frequency range (the range between the highest and lowest frequency allowed in the signal).
- The echo planar technique suffers from a very low bandwidth in the phase encode direction.
- Typically, the bandwidth per pixel is <20 Hz.
- A local shim inhomogeneity of 100 Hz (as is quite typical close to the frontal sinuses at 3.0 T) can lead to a mis-localisation of the signal in that region by ~ 5 pixels.



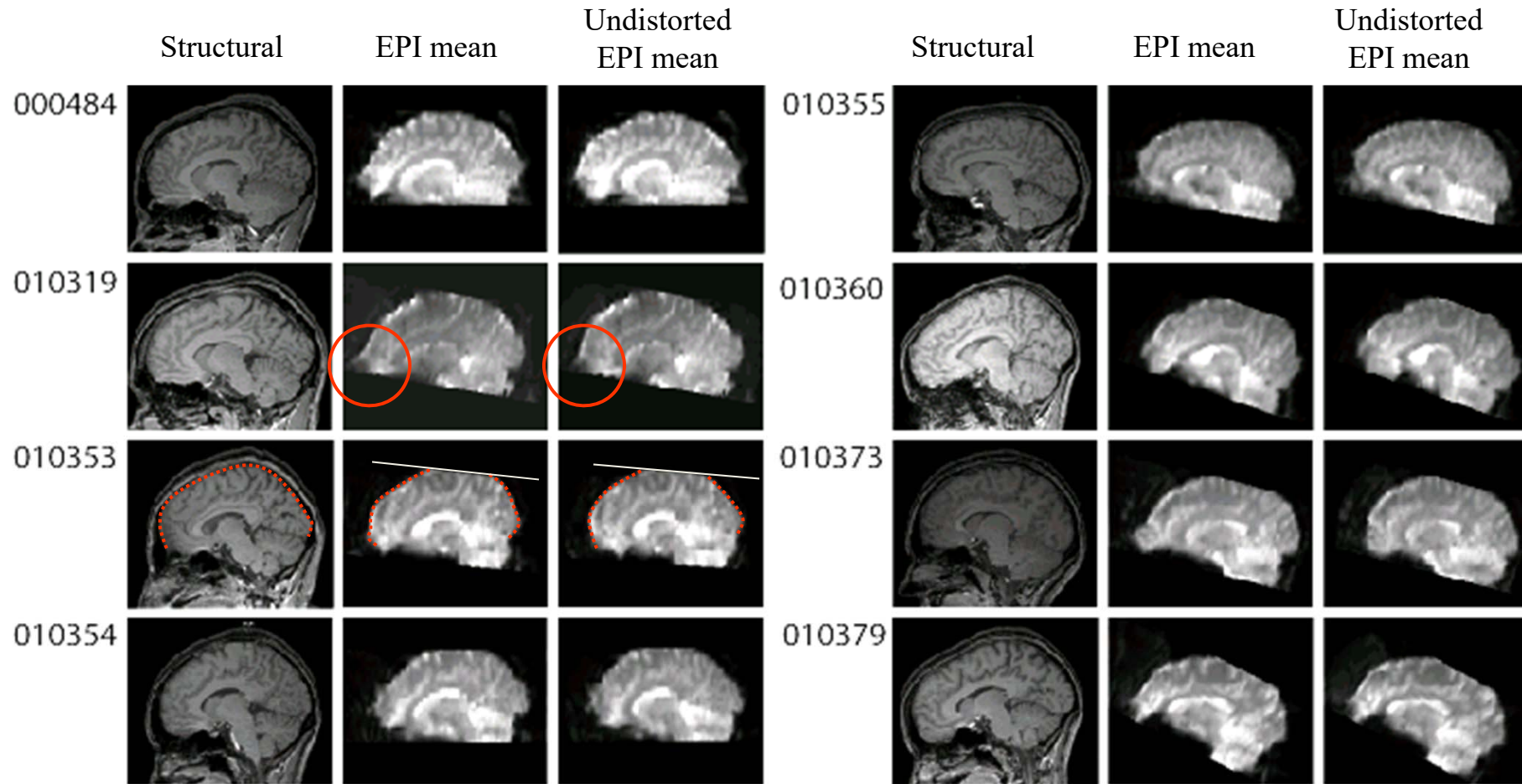
Tackling artefacts I

- **Distortion**
 - Optimise acquisition
 - Parallel acquisition (GRAPPA, SENSE)
 - Multi-shot EPI



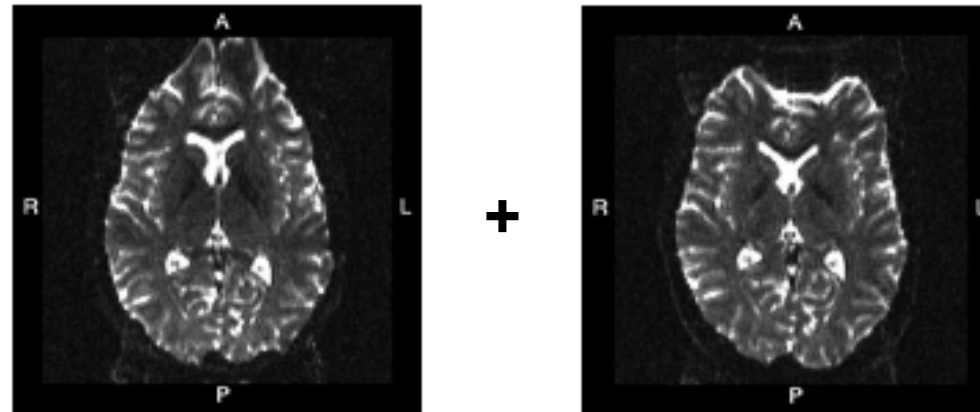
- Acquire fieldmaps & undistort

Fieldmap undistortion: evaluation by eye



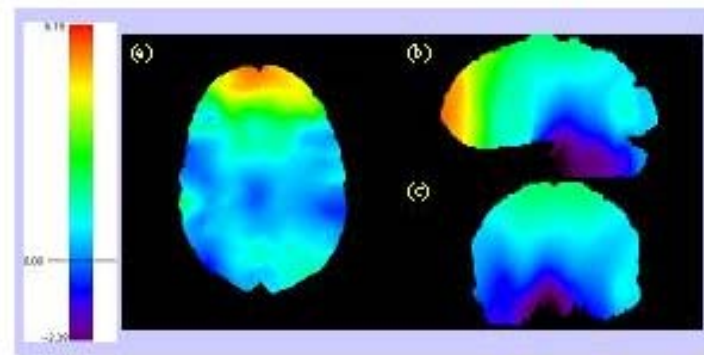
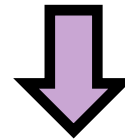
Cusack, Brett & Osswald (2004)

EPI distortion correction - TOPUP



Phase encode direction P>>A

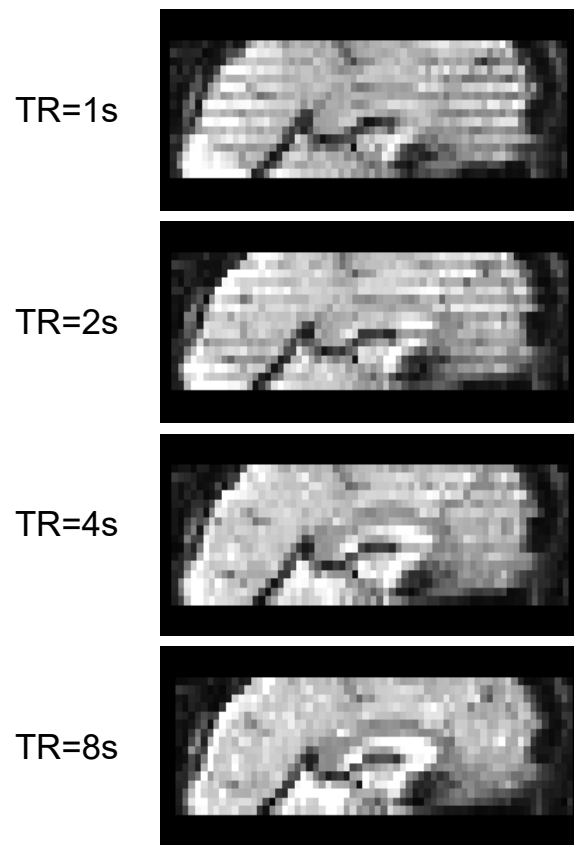
Phase encode direction A>>P



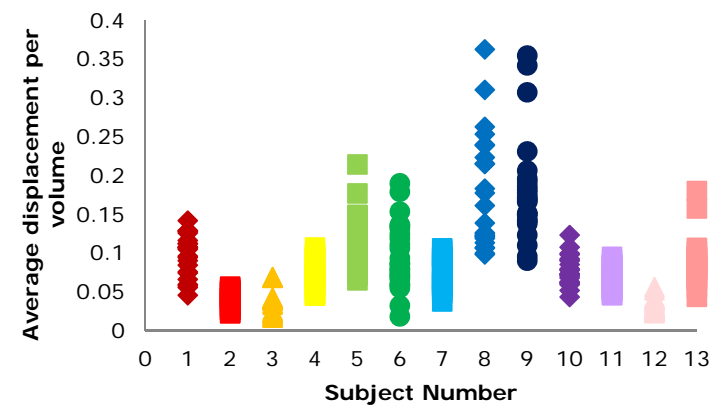
EPI distortion map. The colour coding shows the amount of displacement in pixel units.

Tackling artefacts II

- **Distortion by movement**



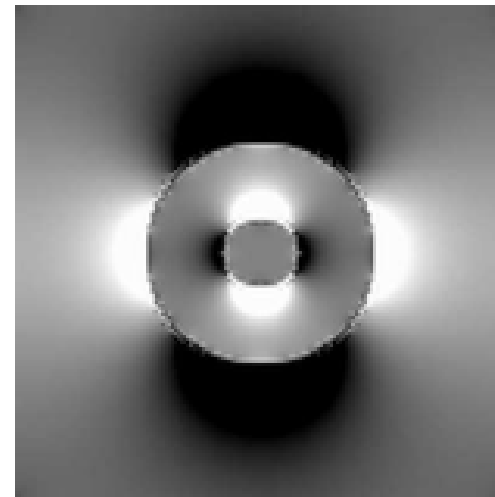
- Maximise subject comfort in the scanner
- Apply post-acquisition motion correction
- Include movement parameters in the model
- Choose the right subjects!



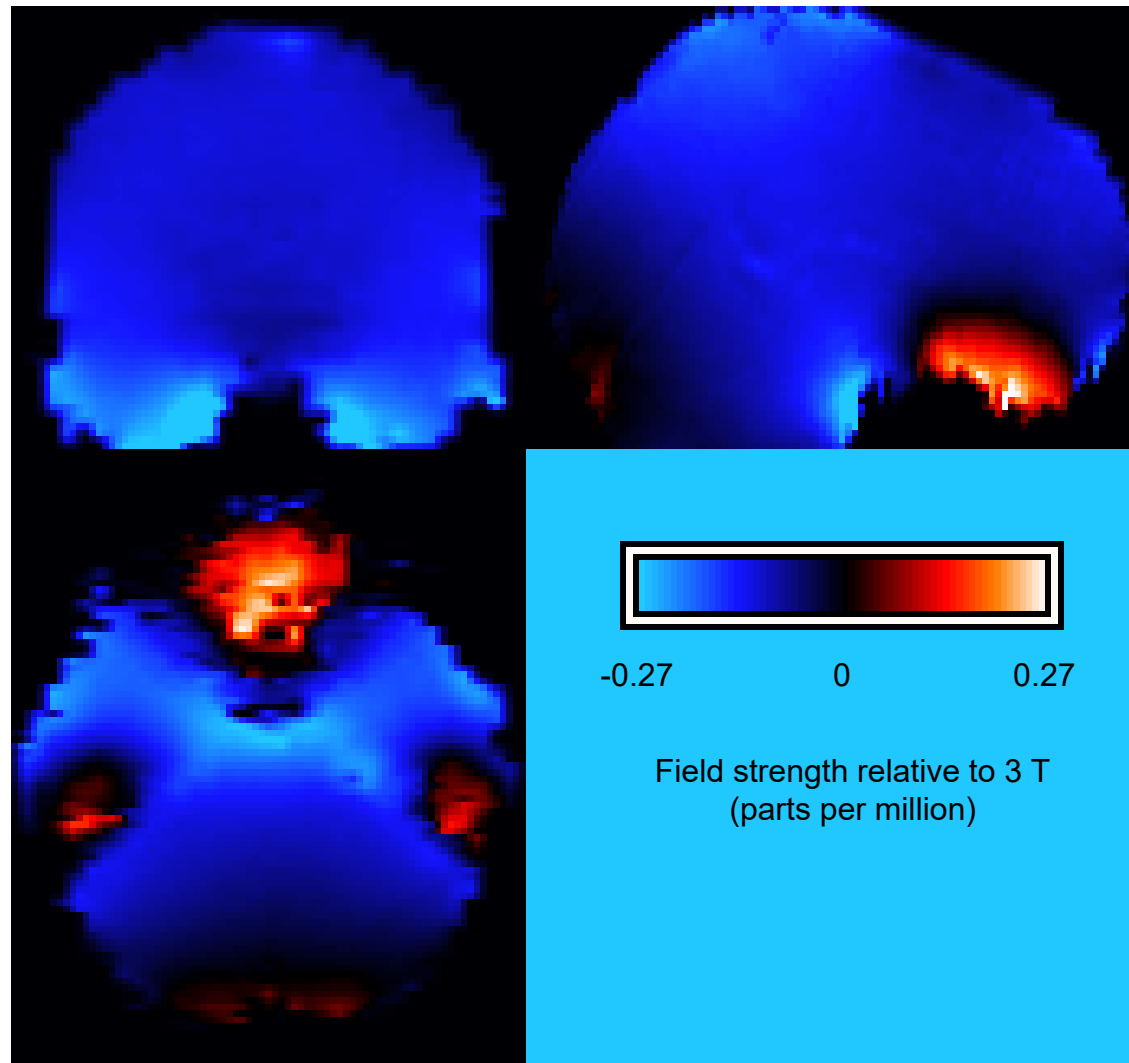
The B_0 field should be homogeneous, but...

- MRI scanners apply a strong magnetic field (3T at CBU)
- Ideally, field should be homogeneous
 - Easy to do when the scanner is empty, but ruined as soon as a head is put in
- Different materials interact differently with external magnetic fields and act to strengthen or weaken them

Free space	1.00000000
Air	1.00000040
Water	0.99999096
Fat	0.99999221
Bone	0.99999156
Blood	0.99999153
Grey matter	0.99999103
White matter	0.99999120
Iron	150-5000



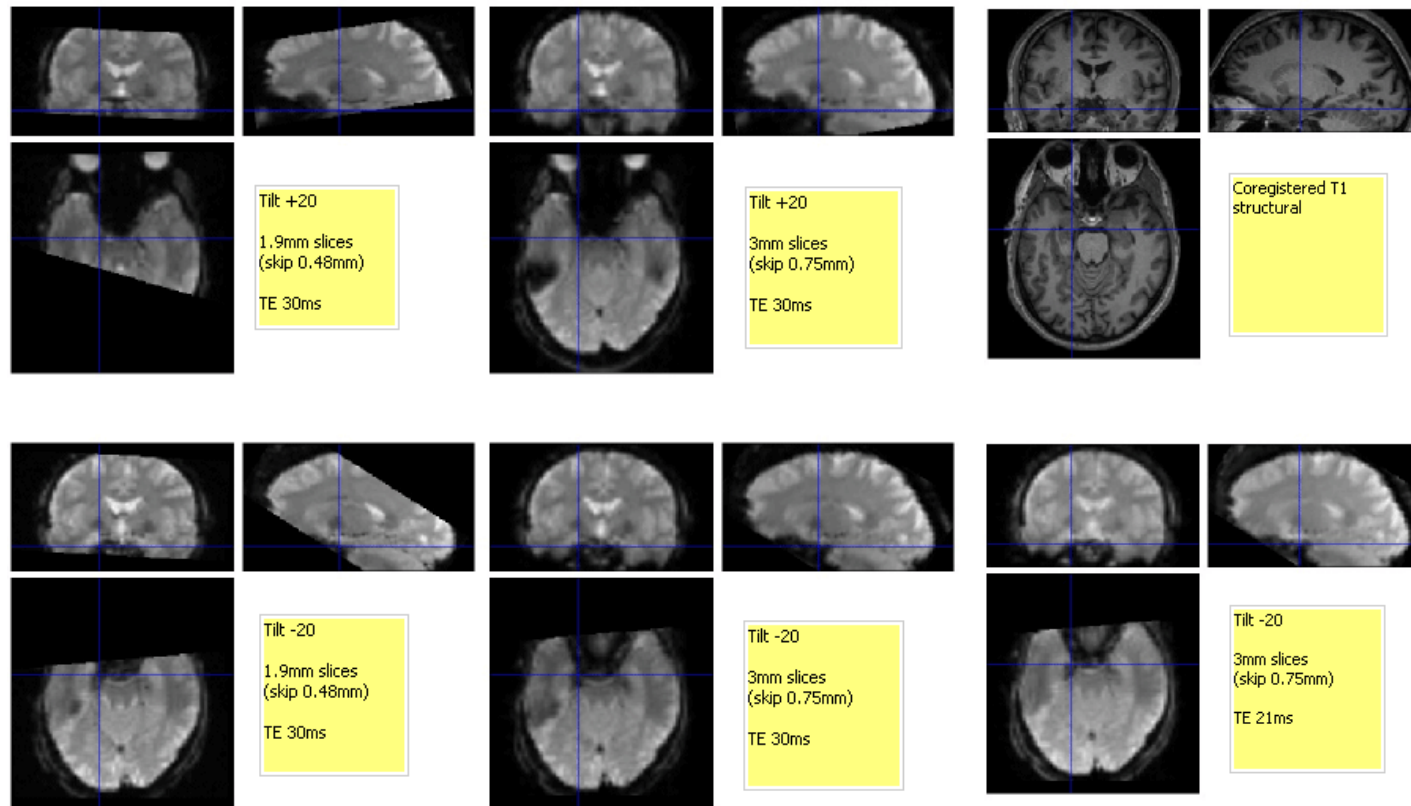
The B_0 field should be homogeneous, but...



Tackling artefacts III

- **Dropout**
 - Optimise acquisition parameters (e.g., TE, slice orientation, voxel size and slice thickness)
 - Z-shimming
 - Use spin-echo/ multi-echo
 - Passive shimming (Wilson, Jezzard and colleagues; Cusack et al, 2004)

Optimising parameters to reduce dropout



From Rik Henson

Summary

- BOLD fMRI involves a complicated set of couplings
 - Be careful when interpreting effects, or comparing fMRI with other imaging modalities
- It can fail in many ways
 - Optimise acquisition and analysis
 - Perform quality control

Coming up this week...

- Tomorrow:
2:30pm – MRI tour and demo
- Thursday:
1:00pm – Introduction to Diffusion MRI
- Friday:
2:00pm – Advanced Diffusion MRI

And next week!

- Monday 20th January:
9:30am – fMRI I: Pre-processing
- Tuesday 21st January:
1:00pm – fMRI II: GLM and experimental design
- Friday 24th January:
1:00pm – fMRI III: Group analysis and statistical inference

Questions?

marta.correia@mrc-cbu.cam.ac.uk